

Agency—Agency Karrie Jacobs on MoMA's Growth  
Piercy&Company Assessing Canadian Architecture  
David M. Schwarz Gabrielle Bullock Uses Her Voice  
Recession-Proofing, Part 2

architectmagazine.com  
The Journal of The American  
Institute of Architects

## The Residential Architect Design Awards

*Skinny, exact, simple, knowing for today*





## SKYVALLEY HOUSE

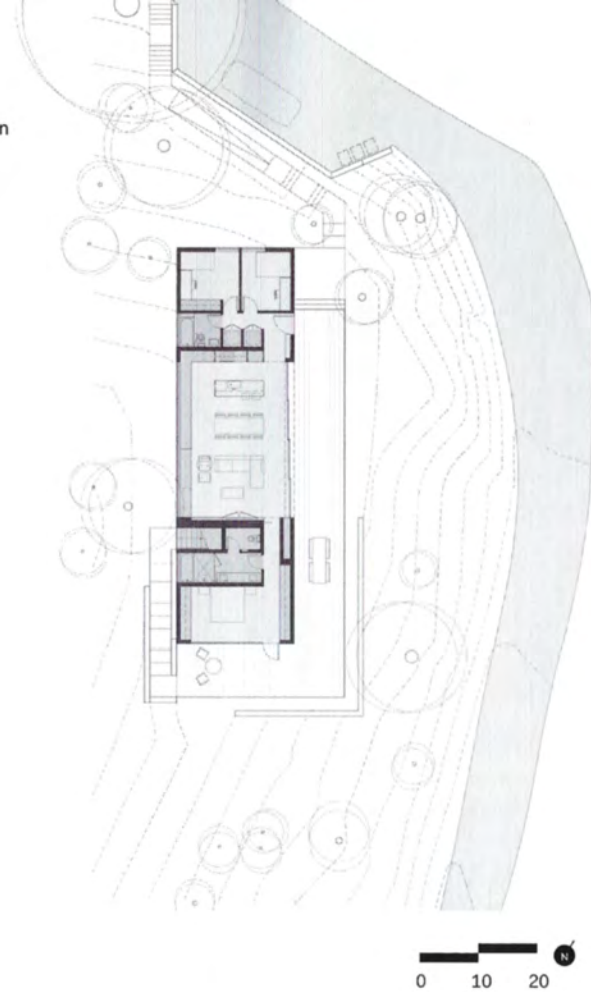
LAKE ARROWHEAD, CALIF.  
EDWARD OGOSTA ARCHITECTURE

A  
O  
W  
N  
A  
R  
T  
H  
E  
B  
O  
A  
R  
D  
S

Los Angeles–based Edward Ogosta Architecture faced a lot of challenges when conceiving the SkyValley House in Lake Arrowhead, Calif.: difficult sloping topography exacerbated by tight building setbacks, dense vegetation, and community regulations that prescribed “a nostalgic Alpine architecture with steeply pitched roofs, ‘earth tones,’ and decorative detailing.”

The design that emerged for the 1,450-square-foot single-family residence is configured on one level, with the primary living spaces—kitchen, dining, and living—in the center, with entry, guest bedroom, and office to the north and master suite to the south. The site’s slope drives the house’s directionality,

Floor Plan



"I like the massing and the different elevations—and how it starts to change as you move around the building."  
—Jenny Wu

with the west facing into a hillside—allowing for just clerestory windows on that side. A wide exterior deck to the east and south extends the living spaces and master bedroom over and above the descending landscape.

The house is a mix of the simple and complex: There's a straightforward rectangular floor plan and black corrugated-metal cladding on both exterior walls and roof, but the structure is topped by slopes that are momentarily hip, shed, and gable. The forms fulfill the "Alpine" stricture of the design guidelines while reading as asymmetrical and decidedly contemporary. The volume is split by a narrow slot of space that serves as a rooftop stargazing platform, and is accessed via an exterior stair tucked into the hill. Light interior finishes provide a stark contrast to the dark exterior: White plaster walls and ceilings and oiled white oak floors help distribute daylight throughout, while contributing to an aesthetic that the architects describe as a "California chalet for the 21st century."

